



QILIN ITA

INGENIERIE
DE LA TRANSFORMATION
D'ACTIFS



Table of contents

Page 03 ————— **QILIN ITA**

Page 04-07 ————— **Our areas of expertise**

Page 08 ————— **The team**

Page 09-16 ————— **Some of our operations**



QILIN ITA

QILIN
ITA
INGENIERIE
DE LA TRANSFORMATION
D'ACTIFS

In order to strengthen its group, QILIN COMPANY has created QILIN ITA, a structure that brings together 4 businesses dedicated to construction, enabling an agile organization and comprehensive control of operations :

- ENGINEERING
- CONSTRUCTION
- MATERIALS PROCUREMENT MANAGEMENT
- STUDIES & CONSULTING

Under the direction of one of its founding partners, Arnaud CARPIN, also Managing Director Engineering & Construction of the QILIN COMPANY group and member of the Executive Committee, the QILIN ITA company relies on the best handpicked professionals to meet the needs of the group but also on behalf of third parties.



Our areas of expertise

Residential & Commercial

QILIN
ITA
INGENIERIE
DE LA TRANSFORMATION
D'ACTIFS

ENGINEERING

PROJECT MANAGEMENT - ENGINEERING

- Elaboration of the Technical Specifications (CCTP) and operational management of construction work, with regards to costs, deadlines, and technical choices, all in respect of the specifications.
- Conception, diagnostic, state of affairs, functional analysis and feasibility studies, sketches, preliminary studies, and proposals for technical arrangements.
- TCE technical studies, definition of construction methods.
- Description of structures and buildings.
- Preparation of technical documentation for calls for tenders.



PROJECT OWNER ASSISTANCE

- Audit
- Programmation
- Conduct of operations
- Assistance to the contracting authority in the definition of the objective and the design of the real estate project
- Team building
- Administrative, technical and financial assistance
- Monitoring of the project and compliance with specifications and schedule
- Participation in the reception of the works
- Participation in the delivery of the project

SSC* AND COST MANAGEMENT

- Scheduling, supervision, and coordination of construction sites, development and monitoring of work schedules
- Elaboration of Technical Specifications (CCTP) for all operations
- Project estimation, contractor selection, and analysis of bids
- Financial monitoring of construction work, preparation of payment requests and financial closure
- QILIN ITA has an in-house construction economist, which allows it to carry out advanced missions in project estimations, negotiation during contractors consultations, and comparative analysis of bids

*Scheduling, Supervision and Coordination

CONSTRUCTION AND PROCUREMENT MANAGEMENT

EXECUTION

- Technical and economic monitoring of construction work.
- Control of execution studies.
- Reception of the structures/buildings.

PROCUREMENT MANAGEMENT

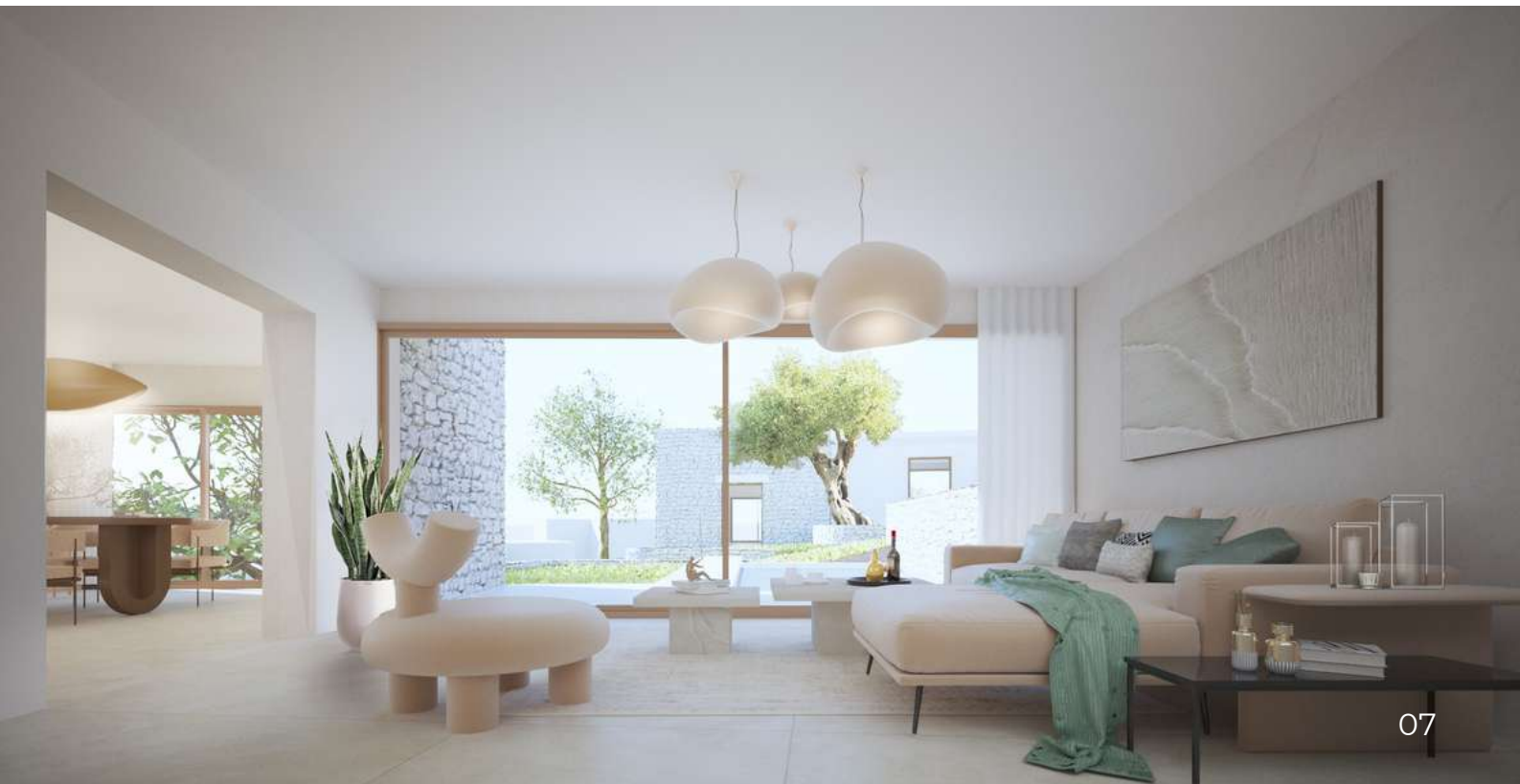
- Analysis of procurement orders.
- Sourcing and supplier consultations.
- Qualification of suppliers.
- Follow-up of orders.
- Management of delivery and storage.



STUDIES & CONSULTING

CONSULTING & EXPERTISE

- Heritage analysis
- Operation management
- Operations management consulting
- Building technical audit
- Real estate expertise
- Feasibility, opportunity analysis





▶ Arnaud **CARPIN**
Co-founder QILIN ITA



Véronique **ROSA-DONATI**
Executive Assistant to the CEO



Stéphane **LE COUËDIC**
Senior project manager



Abdessamad **HADADI**
Logistics project manager



Nicolas **BASTOS**
Project manager



Sergio **PINTO FERREIRA**
Construction manager



Foucault **JANNIN**
Logistics Operation Manager



Gueric **DE BELLAING**
Economiste de la construction



Coralie **PALAISE**
Interior designer



An **PHAM**
Architect



Eric **LAMBERT**
Drafting designer

The team

QILIN
ITA
INGENIERIE
DE LA TRANSFORMATION
D'ACTIFS



Some of our operations

QILIN
ITA
INGENIERIE
DE LA TRANSFORMATION
D'ACTIFS

REHABILITATION

Mixed-use building, Paris, 75018

Creation of a business and a rooftop loft. Feasibility study and construction site monitoring on a constrained site. Partial execution project management mission combining high technicality and management of surrounding areas.



Neuilly sur Seine 92200

Raising a R+6 residential building offering 9 high-end accommodations ranging from studios to 4 rooms, with balconies, terraces and garden. Technical AMO mission in supervision of the Project Management and works companies.



DELAMARE warehouse, le Havre, 76600

ICPE renovation and raising of the entire site to a height of 5 m of a 53,000 m² warehouse with photovoltaic power plant. Project Management Assistance Mission for the Design phase, integrating the technical management of the studies and the consultation and appointment of the general contractor.





Residential building, Gennevilliers, 92036

Rehabilitation of a residential building in Gennevilliers. BET mission, TCE Diagnostics/Sketches. and monitoring of execution in partnership with the Project Manager, design architect for a French SEM.

Housing, Colombes, 92700

Heavy rehabilitation of a building complex made up of workshops. Design and Execution Project Management Mission integrating operational management and monitoring. Carrying out TCE work in partnership with the company QILIN&HESTIA (General contractor of the QILIN Company group).



Logements, Puteaux, 92800

Restructuration lourde d'un ensemble bâti. Mission de Maitrise d'Oeuvre de Conception et d'Exécution en appui de l'entreprise générale QILIN&HESTIA (entreprise générale du groupe QILIN Company) qui a réalisé les travaux.



Rue Saint Augustin, Paris, 75002

Complete renovation of a 120 m² apartment used as residential accommodation for an individual with the creation of two bedrooms and a master room. Design and Execution Project Management Mission with assistance in the award of works contracts. Design and Execution with assistance in the award of works contracts.



Rue Eugène Varlin, Goussainville, 95190

Renovation of a mixed building for the creation of a social children's home, intended for the reception and accommodation of 10 children and an administration. Design and Execution Project Management Mission in design and execution with the company QILIN&HESTIA (General contractor of the QILIN Company group) turnkey.

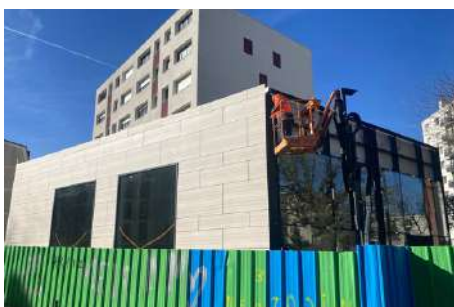


Rue Marcadet, Paris, 75018

Renovation of a building for a 2nd category type R ERP project to accommodate 1,490 people. Capacity and regulatory study mission. Construction Economics Mission.



TRANSFORMATION



Gas station, Nogent-sur-Marne, 94130

Transformation of a former gas station into a sports hall. Design and Execution Project Management Mission. Design studies. Consultations. Work management.

ZAC les Belles Vues, Arpajon, 91290

Creation of a new activity warehouse for a private client.
 Design Project Management Mission and Building Permit Assistance.
 Project Management Mission including the designation of companies.



Ilot Chabrol, La Courneuve 93120

Construction of a 14,000 m² mixed-use real estate complex.
 Work management and coordination mission.

RESTRUCTURING

LISAA School, Paris 75013

Restructuring of an office building into a 3rd category ERP school that can accommodate up to 699 students.
 Execution Project Management Mission.



Rue de Lubeck, 75016, Paris

Complete demolition of an old garage and creation of a privileged environment in the heart of the 16th arrondissement for use as a private school.
 Design Project Management Mission.

**CONSTRUCTION AND RENOVATION
06410, BIOT**

Creation of 3 high-end villas in a green setting of 3,300m² with the renovation of a bastide of the same standard for use as private housing.
Design Project Management Mission integrating the management of all technical studies necessary for the completion of the works and monitoring of the works.



**RENOVATION
Villefranche sur Mer (Cistes) 06230**

Modernization of a 300 m² villa and creation of an infinity pool with landscaping.
Design and Execution Project Management Mission with the assistance of a local pilot for operational monitoring of the site.



**REHABILITATION
VILLEFRANCHE SUR MER (BAGATELLE) 06230**

Major renovation of a villa with creation of surface area and construction of a swimming pool.
Design and Execution Project Management Mission with the assistance of a local pilot for operational monitoring of the site.



QILIN
ITA
INGENIERIE
DE LA TRANSFORMATION
D'ACTIFS



1 RUE ROYALE, 92210 SAINT-CLOUD
CONTACT@QILIN-ITA.COM
WWW.QILIN-COMPANY.COM